



# CLEAR BAG POLICY

## ITEMS PERMITTED:

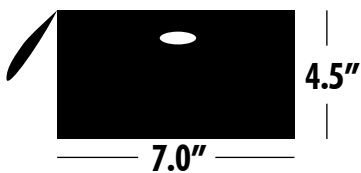
Clutches no larger than 4.5" x 7.0", clear tote no larger than 12" x 12", blankets no larger than 5'x6', binoculars with lenses no longer than 4", items related to medical condition, diaper bags (with child).

## ITEMS PROHIBITED

(INCLUDING, BUT NOT LIMITED TO):

Bags larger than 4.5" x 7.0" (including purses and binocular cases) coolers, laser pointers, banners, flags, noisemakers, weapons, laptops, video recorders, monopods, tripods or any items deemed dangerous or inappropriate.

### ITEMS PERMITTED



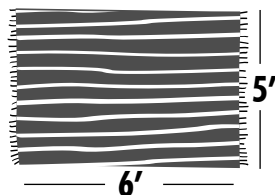
CLUTCH  
NO LARGER THAN 4.5" X 7.0"



CLEAR TOTE  
PLASTIC / VINYL / PVC  
NO LARGER THAN  
12" X 6.0" X 12"



DIAPER BAGS/ACCESSORIES  
WITH CHILD



BLANKETS  
NO LARGER THAN  
5'X6'



BINOCULARS  
WITHOUT CASE



CAMERAS  
WITHOUT BAG



ITEMS RELATED  
TO A MEDICAL  
CONDITION

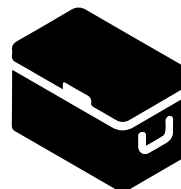
### ITEMS PROHIBITED



NO NON-CLEAR BAGS  
LARGER THAN 4.5" X 7.0"  
(INCLUDING PURSES & BACKPACKS)



NO FOOD & DRINK



NO COOLERS



NO LAPTOPS,  
NO VIDEO RECORDERS  
NO SELFIE STICKS



NO FLAGS, BANNERS,  
UMBRELLAS



NO WEAPONS